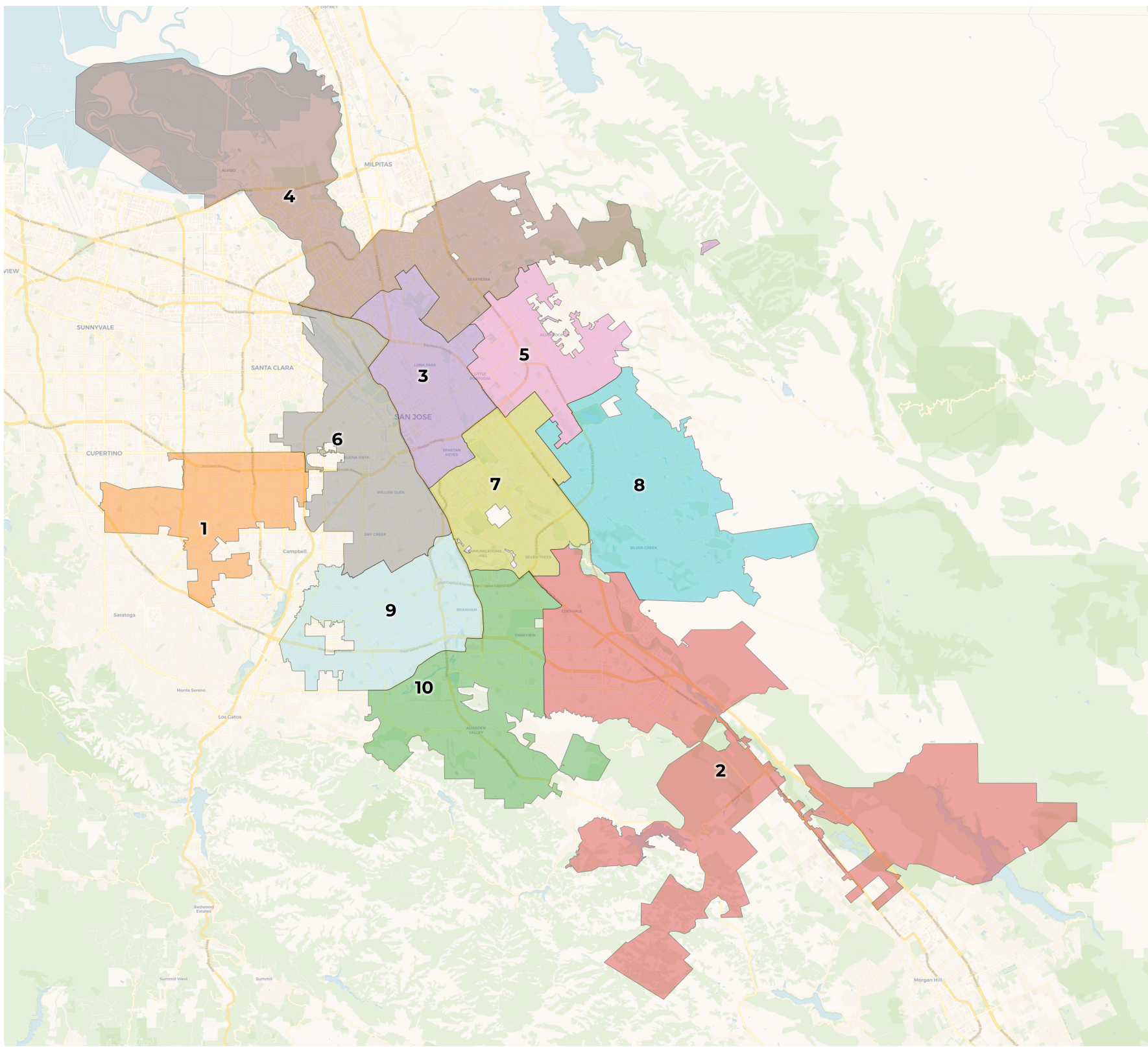


REDISTRICTING PARTNERS

City of San Jose
Council Map Version 1 Updated 12.8



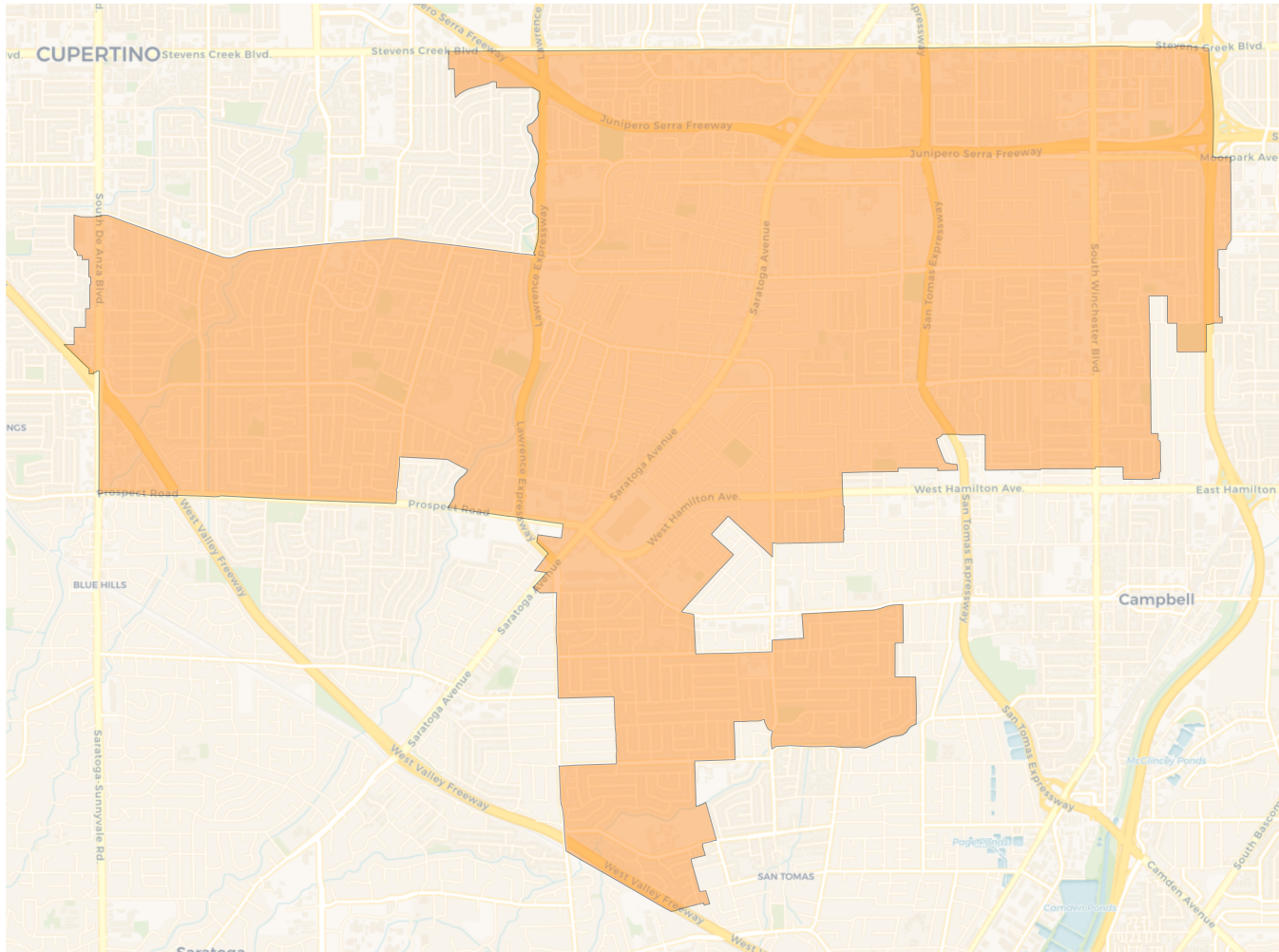
2020 Census

	1	10	2	3	4	5	6	7	8	9
Population	102,238	97,314	99,562	101,992	106,529	100,113	101,299	103,851	103,911	98,874
Deviation	670	-4,254	-2,006	424	4,961	-1,455	-269	2,283	2,343	-2,694
Deviation %	0.7%	-4.2%	-2.0%	0.4%	4.9%	-1.4%	-0.3%	2.2%	2.3%	-2.7%
Other	32,162	43,244	30,227	24,751	18,693	9,456	48,033	10,113	15,500	50,959
Other %	31.5%	44.4%	30.4%	24.3%	17.5%	9.4%	47.4%	9.7%	14.9%	51.5%
Latino	19,804	20,443	34,202	45,938	16,852	54,408	31,624	49,391	22,888	22,087
Latino %	19.4%	21.0%	34.4%	45.0%	15.8%	54.3%	31.2%	47.6%	22.0%	22.3%
Asian	47,175	31,233	31,746	27,456	68,840	34,460	17,885	41,827	63,327	23,148
Asian %	46.1%	32.1%	31.9%	26.9%	64.6%	34.4%	17.7%	40.3%	60.9%	23.4%
Black	3,097	2,394	3,387	3,847	2,144	1,789	3,757	2,520	2,196	2,680
Black %	3.0%	2.5%	3.4%	3.8%	2.0%	1.8%	3.7%	2.4%	2.1%	2.7%

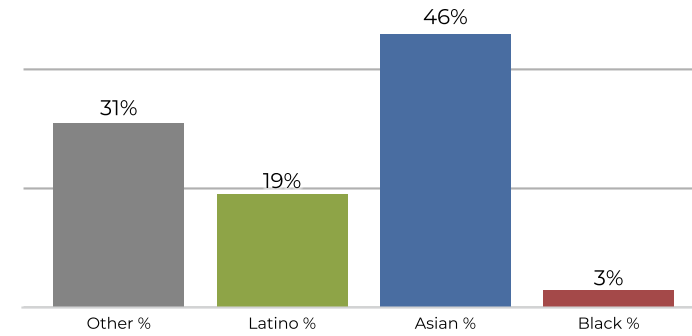
Citizen Voting Age Population (CVAP)

	1	10	2	3	4	5	6	7	8	9
Total CVAP	58,176	65,214	63,886	61,615	61,469	59,588	67,213	60,348	71,989	65,164
Other CVAP	28,281	34,954	25,948	20,134	13,968	8,233	39,738	8,296	14,250	41,641
Other CVAP %	48.6%	53.6%	40.6%	32.7%	22.7%	13.8%	59.1%	13.7%	19.8%	63.9%
Latino CVAP	7,906	10,840	18,456	22,316	9,623	27,108	15,414	22,377	15,180	10,903
Latino CVAP %	13.6%	16.6%	28.9%	36.2%	15.7%	45.5%	22.9%	37.1%	21.1%	16.7%
Asian CVAP	19,728	17,196	17,376	15,802	35,768	22,763	8,943	28,321	40,694	10,677
Asian CVAP %	33.9%	26.4%	27.2%	25.6%	58.2%	38.2%	13.3%	46.9%	56.5%	16.4%
Black CVAP	2,261	2,224	2,106	3,363	2,110	1,484	3,118	1,354	1,865	1,943
Black CVAP %	3.9%	3.4%	3.3%	5.5%	3.4%	2.5%	4.6%	2.2%	2.6%	3.0%

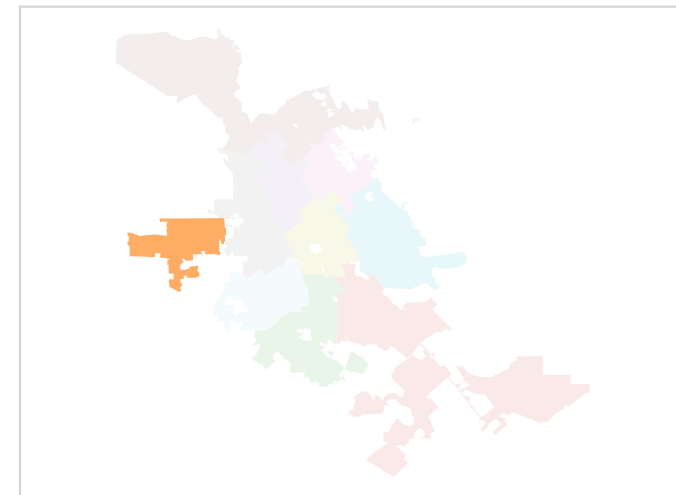
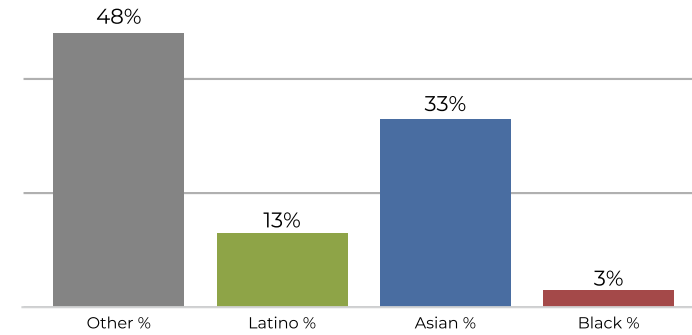
District 1



2020 Census

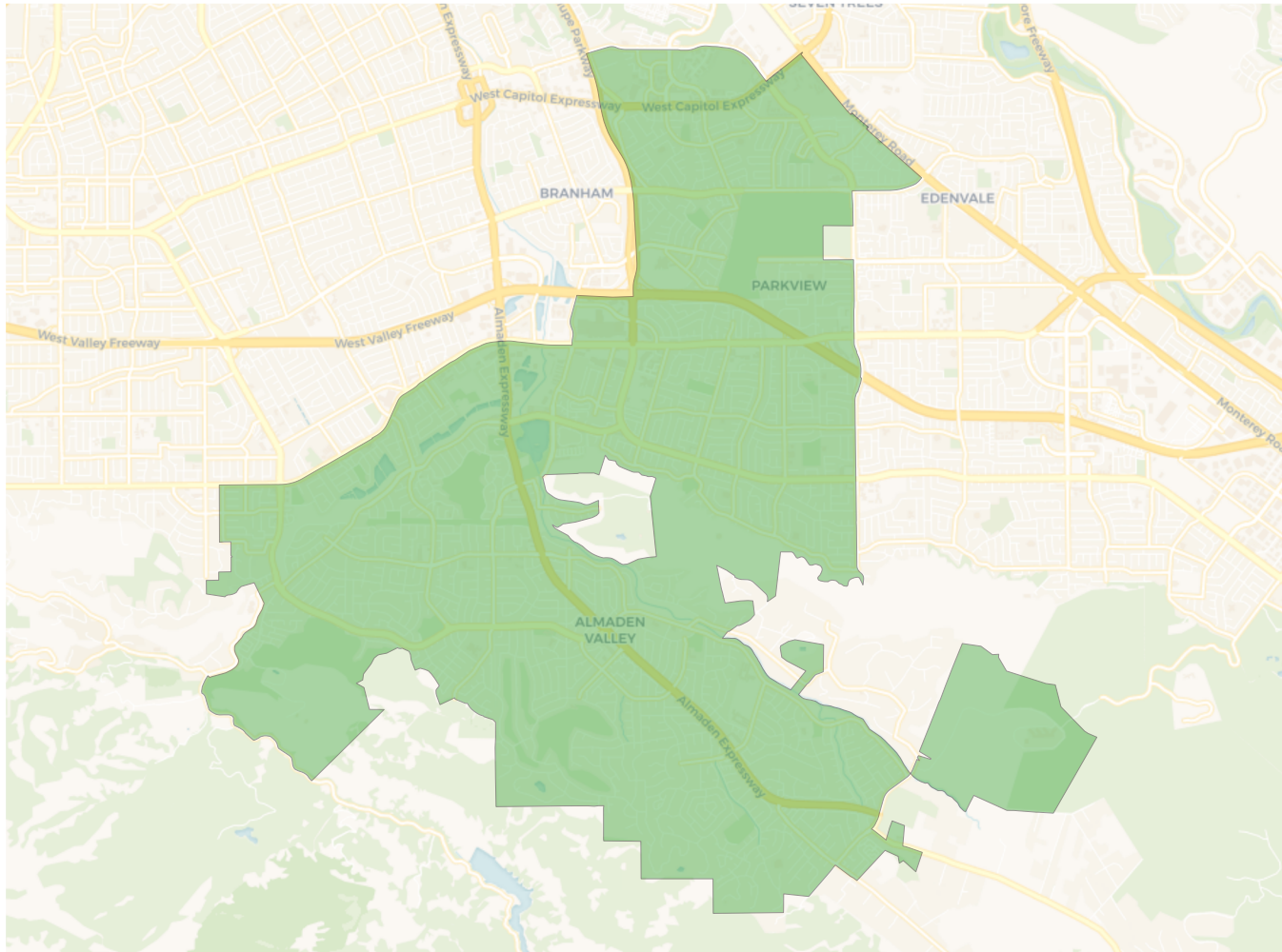


Citizen Voting Age Population

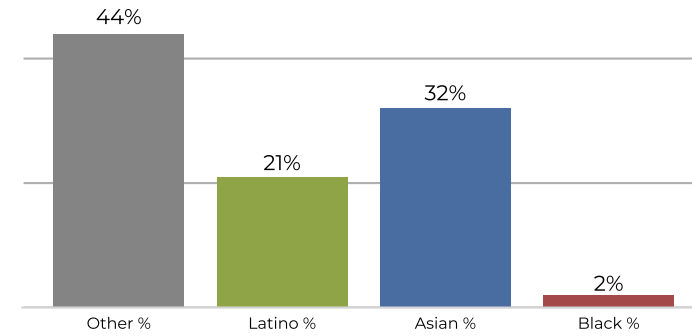


Population	Deviation	Deviation %	Other	Other %	Latino	Latino %	Asian	Asian %	Black	Black %
102,238	670	0.7%	32,162	31.5%	19,804	19.4%	47,175	46.1%	3,097	3.0%
Total CVAP	Other CVAP	Other CVAP %	Latino CVAP	Latino CVAP %	Asian CVAP	Asian CVAP %	Black CVAP	Black CVAP %		
58,176	28,281	48.6%	7,906	13.6%	19,728	33.9%	2,261	3.9%		

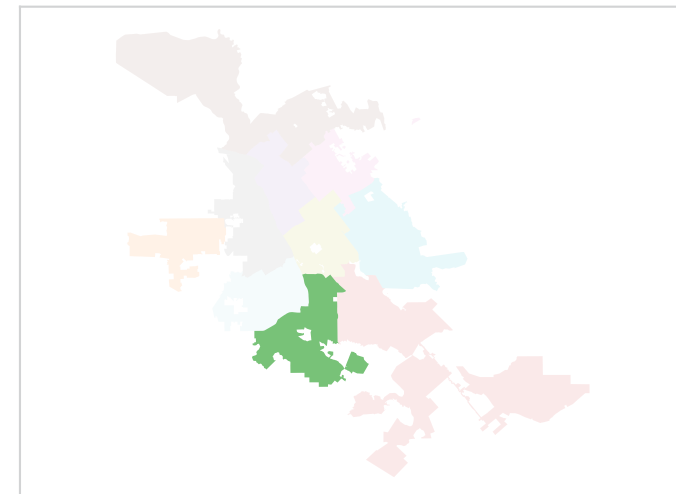
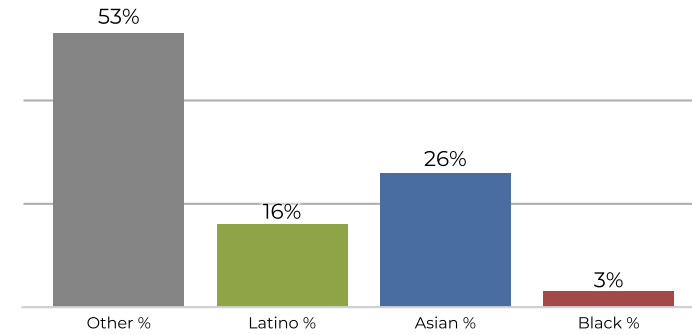
District 10



2020 Census

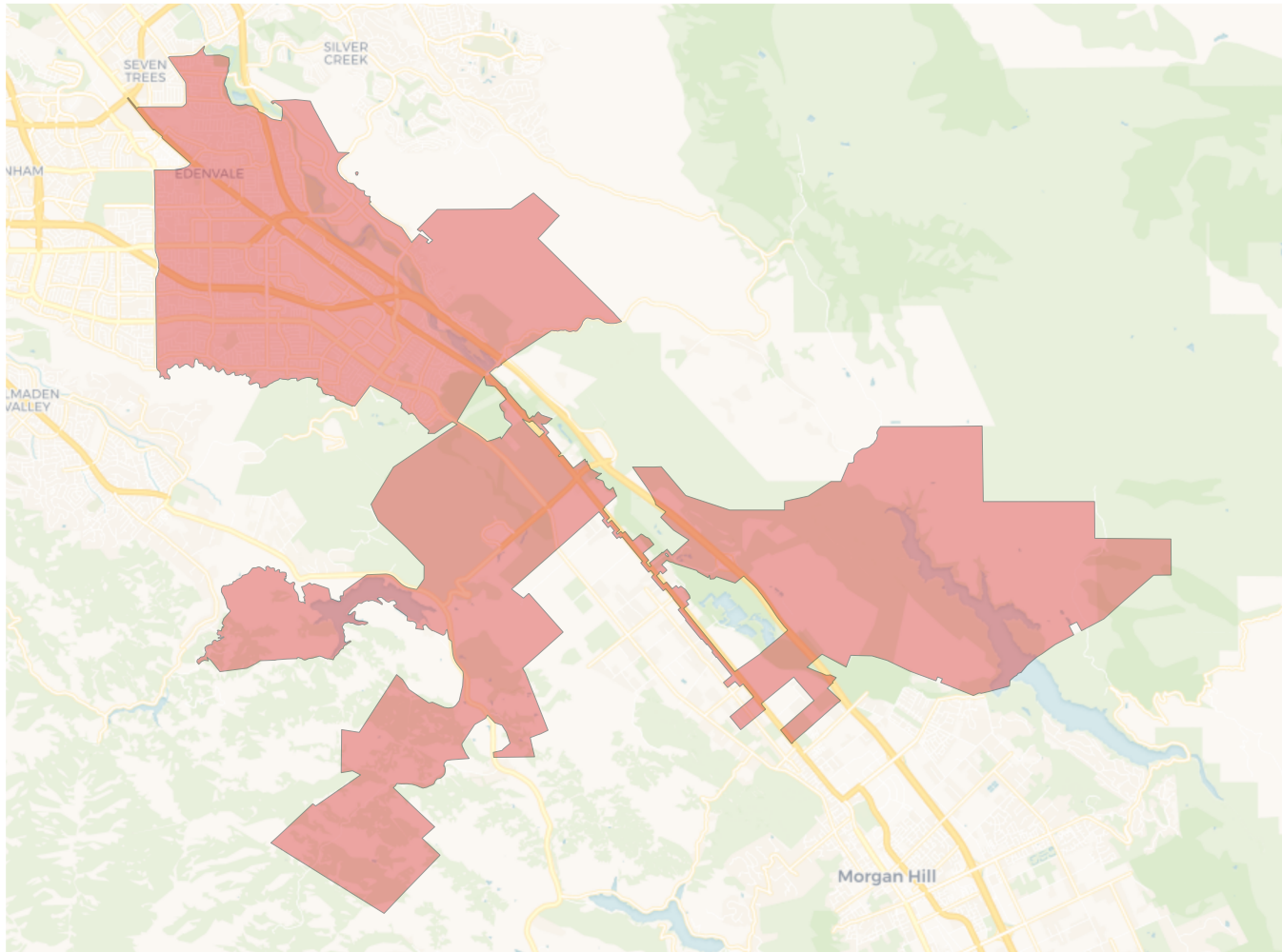


Citizen Voting Age Population

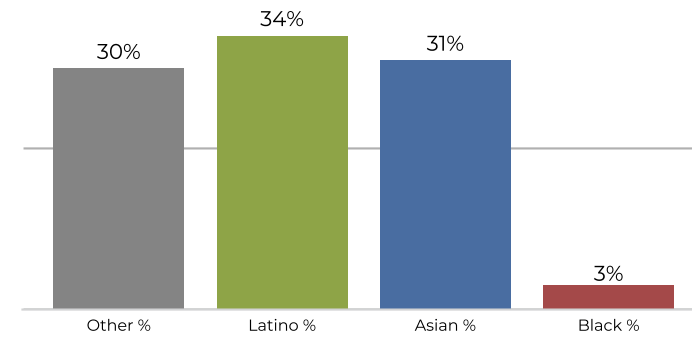


Population	Deviation	Deviation %	Other	Other %	Latino	Latino %	Asian	Asian %	Black	Black %
97,314	-4,254	-4.2%	43,244	44.4%	20,443	21.0%	31,233	32.1%	2,394	2.5%
Total CVAP	Other CVAP	Other CVAP %	Latino CVAP	Latino CVAP %	Asian CVAP	Asian CVAP %	Black CVAP	Black CVAP %		
65,214	34,954	53.6%	10,840	16.6%	17,196	26.4%	2,224	3.4%		

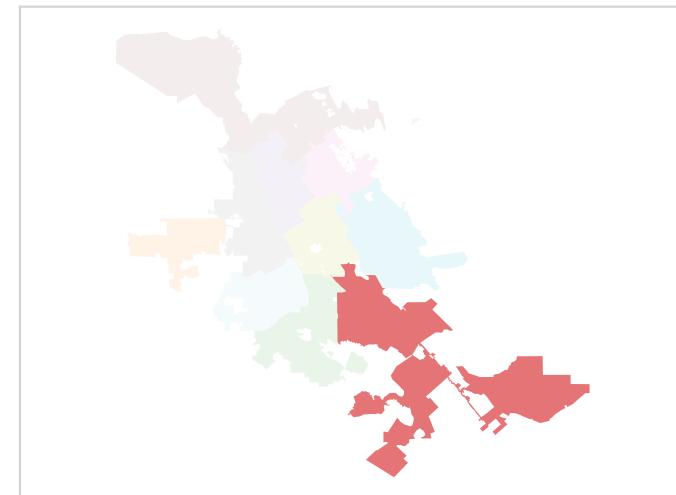
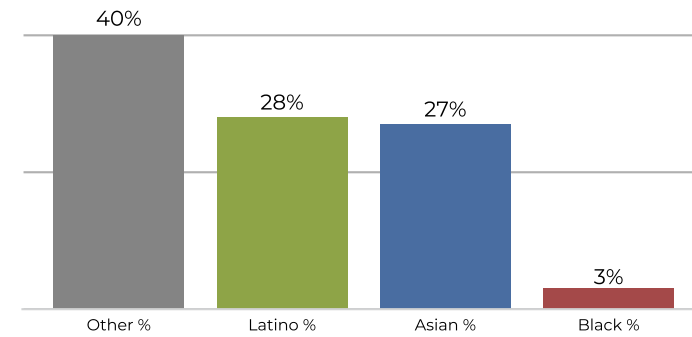
District 2



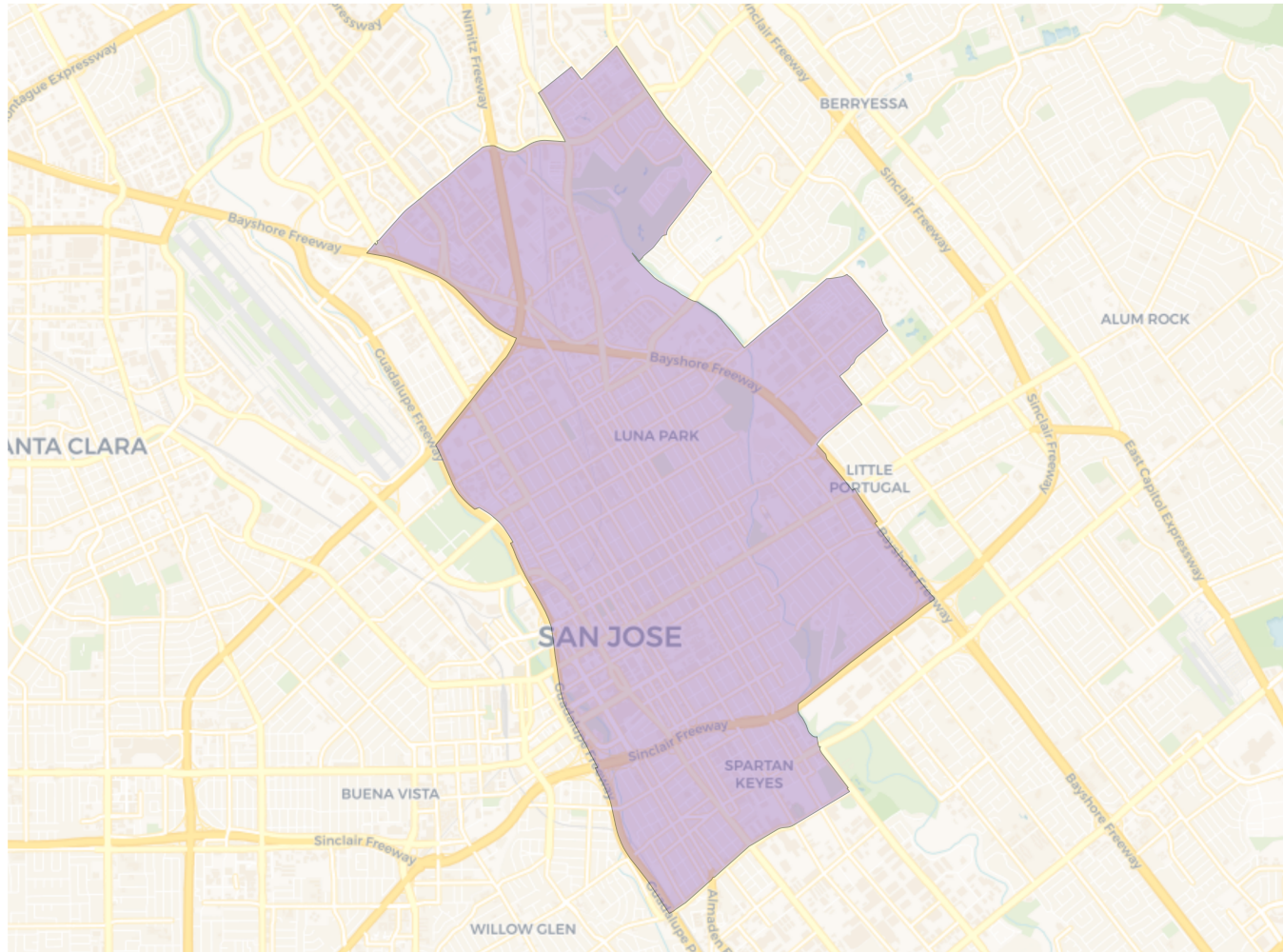
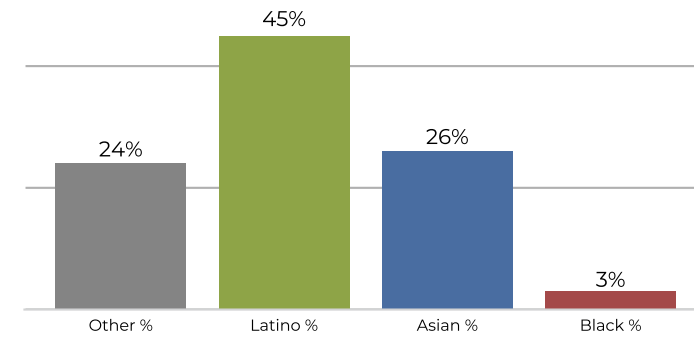
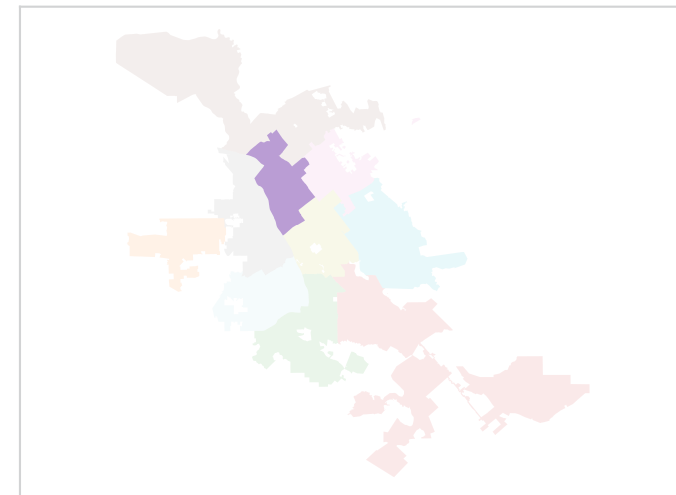
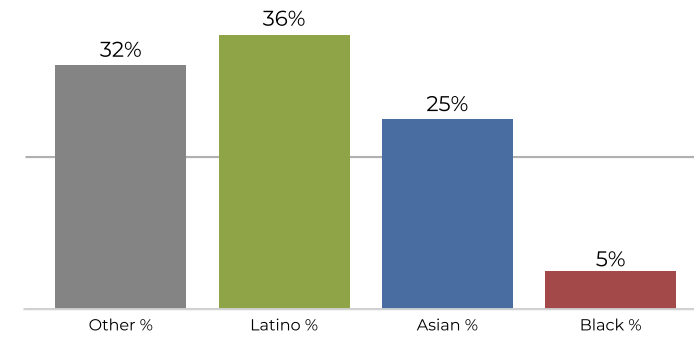
2020 Census



Citizen Voting Age Population

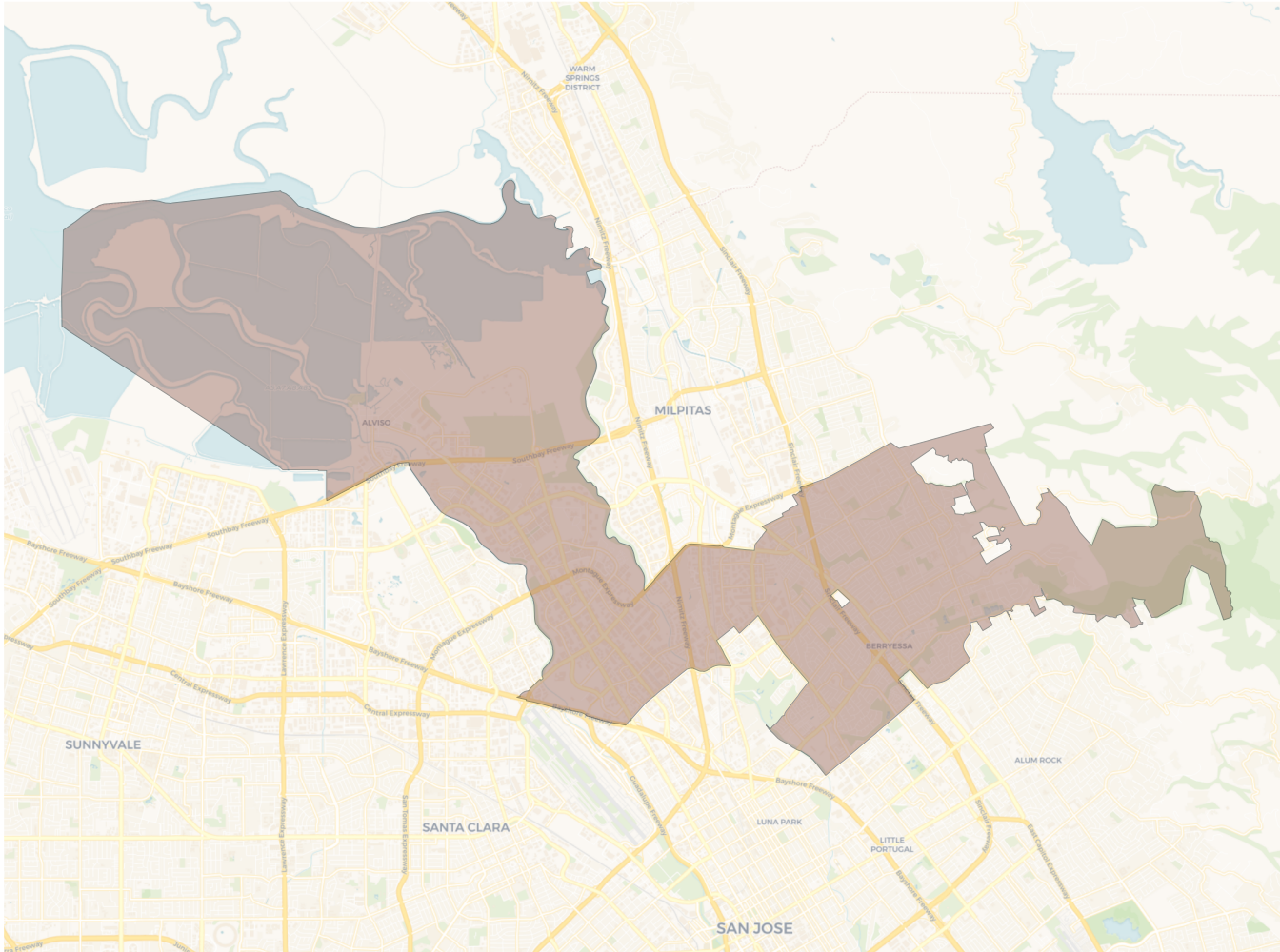


Population	Deviation	Deviation %	Other	Other %	Latino	Latino %	Asian	Asian %	Black	Black %
99,562	-2,006	-2.0%	30,227	30.4%	34,202	34.4%	31,746	31.9%	3,387	3.4%
Total CVAP	Other CVAP	Other CVAP %	Latino CVAP	Latino CVAP %	Asian CVAP	Asian CVAP %	Black CVAP	Black CVAP %		
63,886	25,948	40.6%	18,456	28.9%	17,376	27.2%	2,106	3.3%		

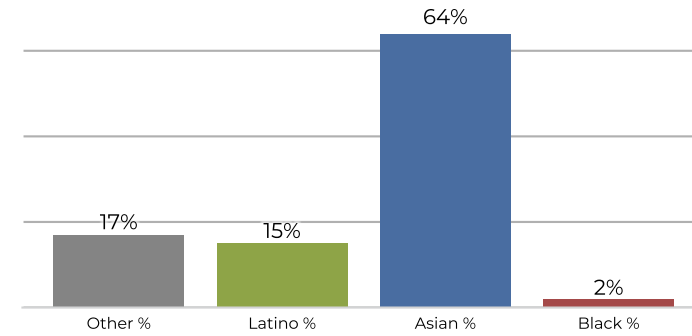
District 3

2020 Census

Citizen Voting Age Population


Population	Deviation	Deviation %	Other	Other %	Latino	Latino %	Asian	Asian %	Black	Black %
101,992	424	0.4%	24,751	24.3%	45,938	45.0%	27,456	26.9%	3,847	3.8%
Total CVAP	Other CVAP	Other CVAP %	Latino CVAP	Latino CVAP %	Asian CVAP	Asian CVAP %	Black CVAP	Black CVAP %		
61,615	20,134	32.7%	22,316	36.2%	15,802	25.6%	3,363	5.5%		

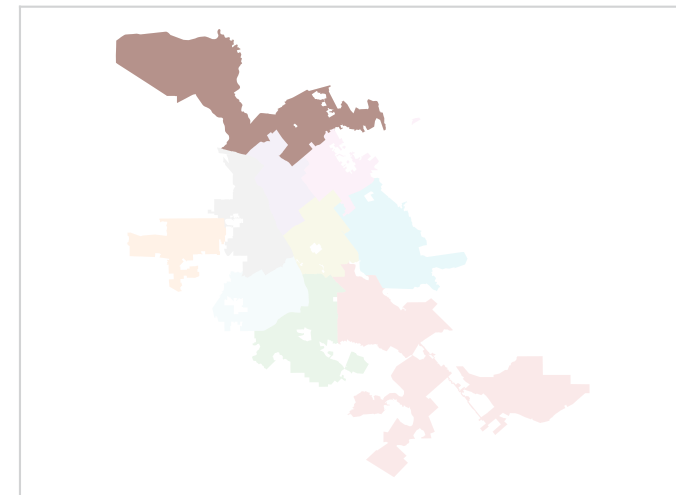
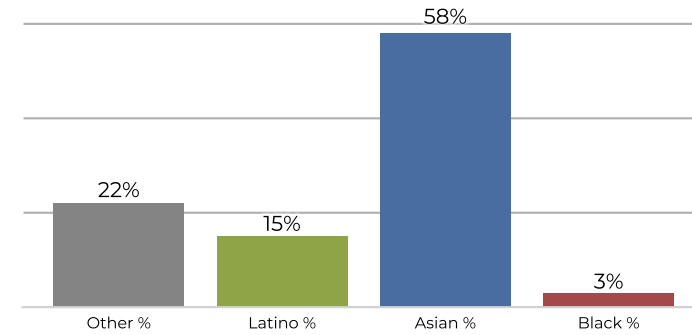
District 4



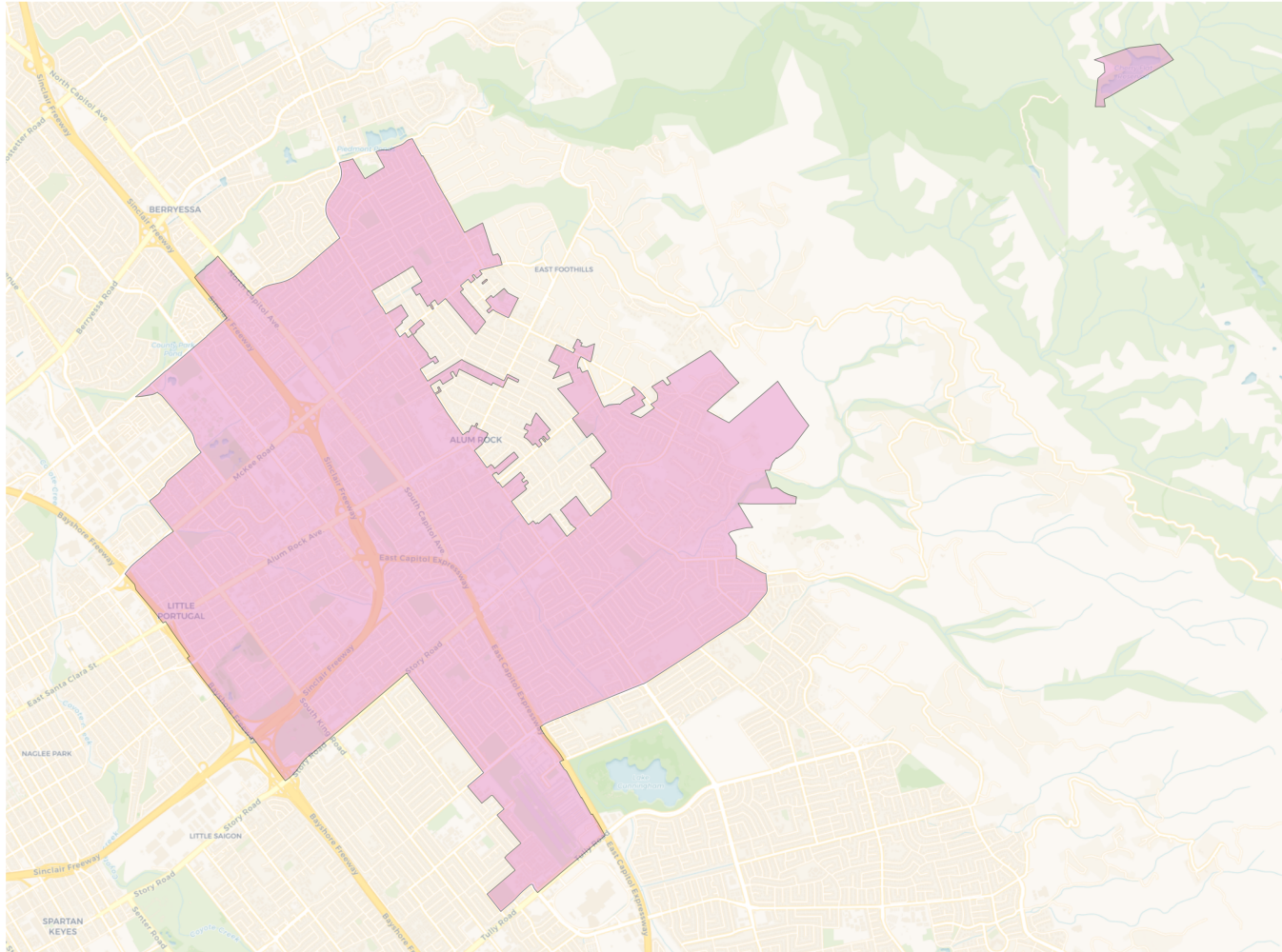
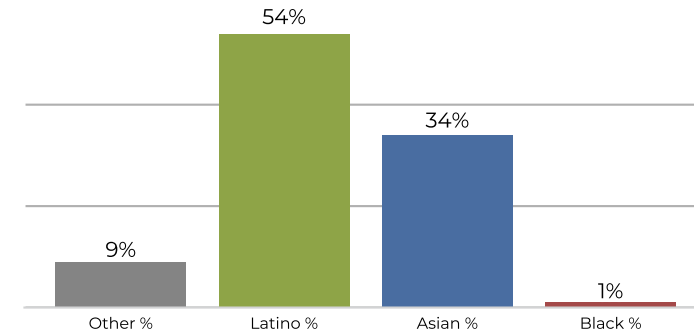
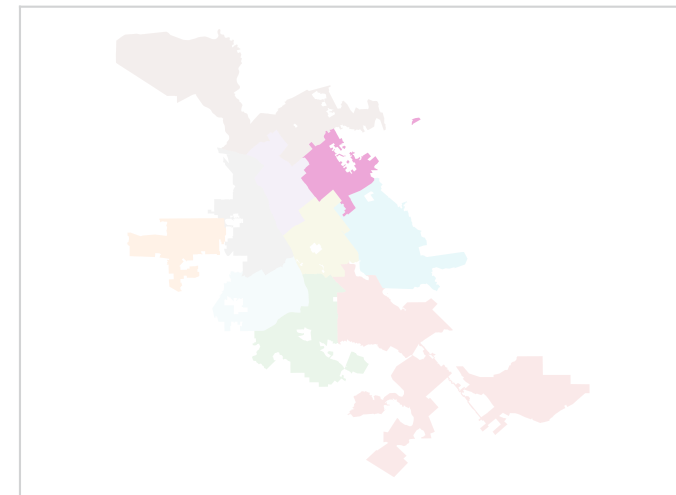
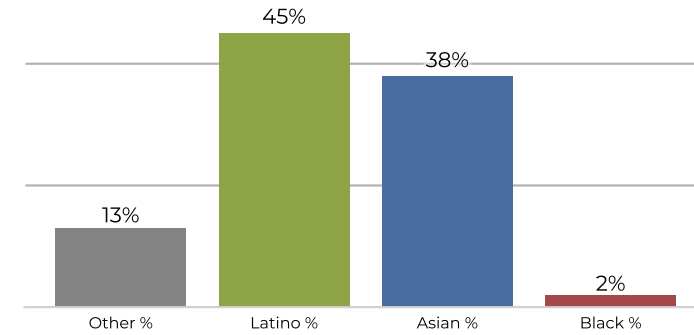
2020 Census



Citizen Voting Age Population

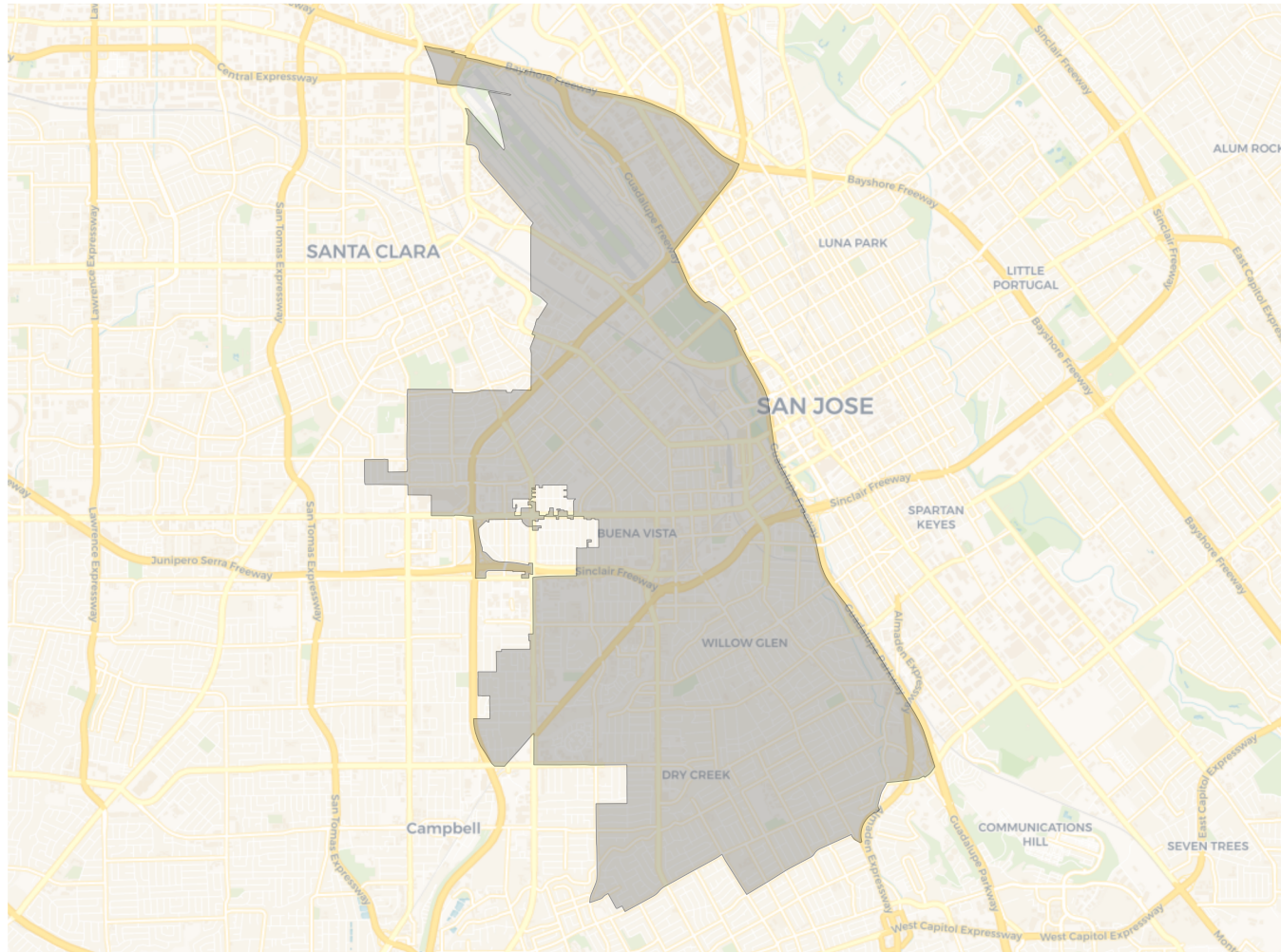


Population	Deviation	Deviation %	Other	Other %	Latino	Latino %	Asian	Asian %	Black	Black %
106,529	4,961	4.9%	18,693	17.5%	16,852	15.8%	68,840	64.6%	2,144	2.0%
Total CVAP	Other CVAP	Other CVAP %	Latino CVAP	Latino CVAP %	Asian CVAP	Asian CVAP %	Black CVAP	Black CVAP %		
61,469	13,968	22.7%	9,623	15.7%	35,768	58.2%	2,110	3.4%		

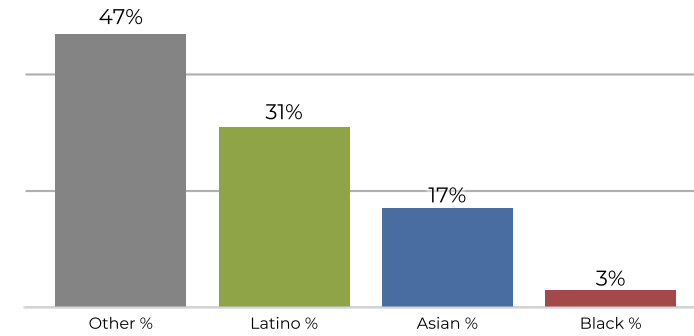
District 5

2020 Census

Citizen Voting Age Population


Population	Deviation	Deviation %	Other	Other %	Latino	Latino %	Asian	Asian %	Black	Black %
100,113	-1,455	-1.4%	9,456	9.4%	54,408	54.3%	34,460	34.4%	1,789	1.8%
Total CVAP	Other CVAP	Other CVAP %	Latino CVAP	Latino CVAP %	Asian CVAP	Asian CVAP %	Black CVAP	Black CVAP %		
59,588	8,233	13.8%	27,108	45.5%	22,763	38.2%	1,484	2.5%		

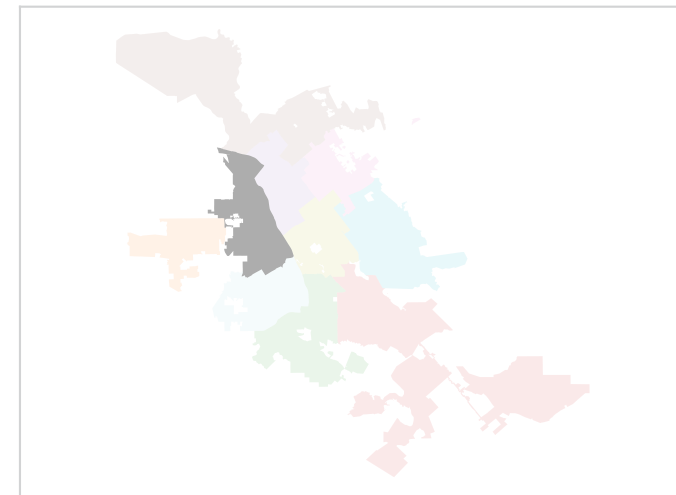
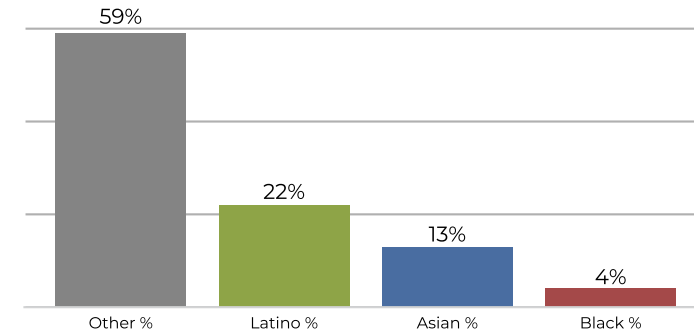
District 6



2020 Census

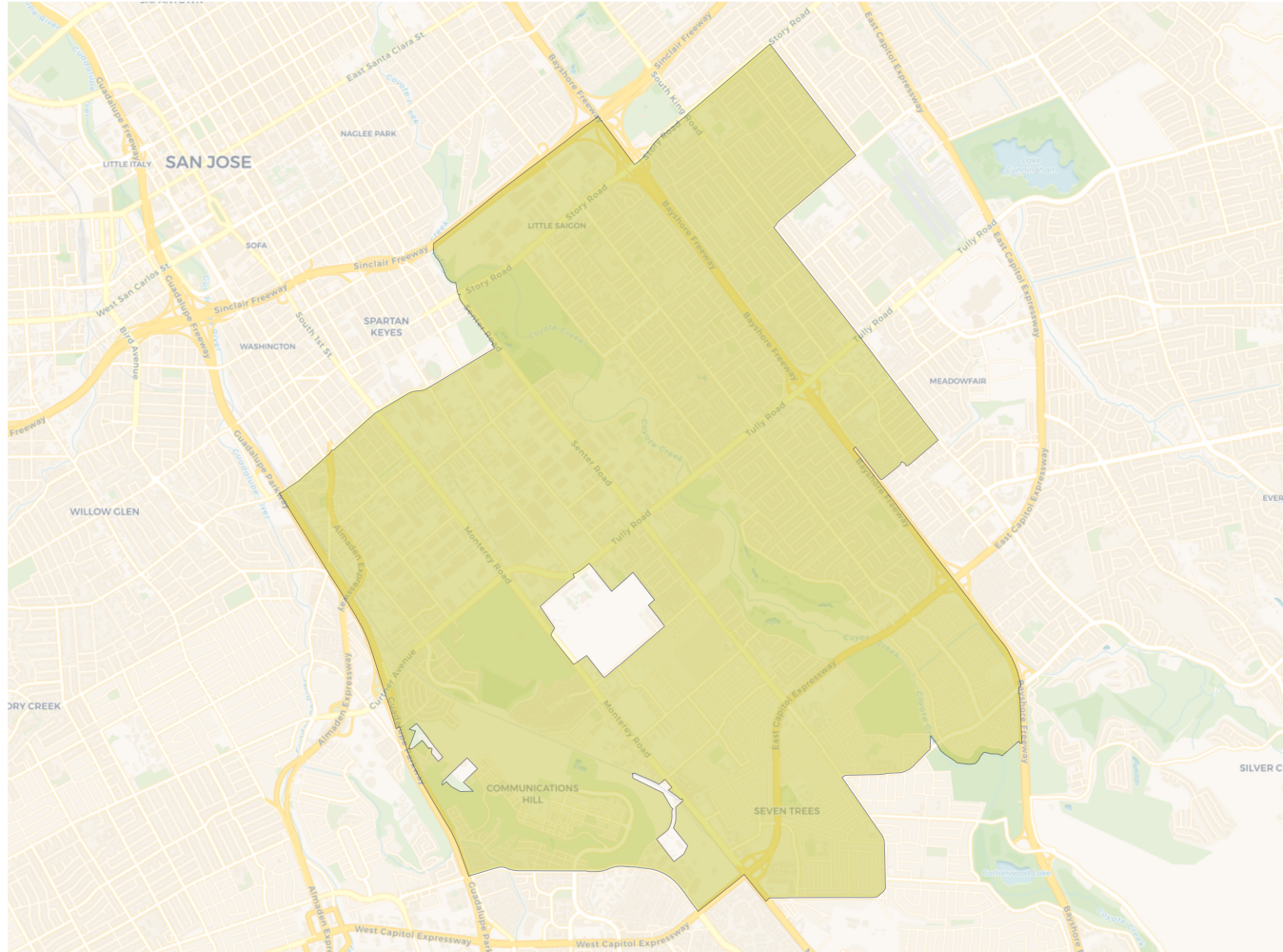


Citizen Voting Age Population

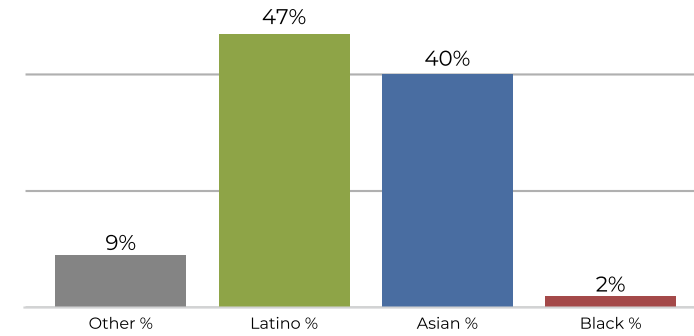


Population	Deviation	Deviation %	Other	Other %	Latino	Latino %	Asian	Asian %	Black	Black %
101,299	-269	-0.3%	48,033	47.4%	31,624	31.2%	17,885	17.7%	3,757	3.7%
Total CVAP	Other CVAP	Other CVAP %	Latino CVAP	Latino CVAP %	Asian CVAP	Asian CVAP %	Black CVAP	Black CVAP %		
67,213	39,738	59.1%	15,414	22.9%	8,943	13.3%	3,118	4.6%		

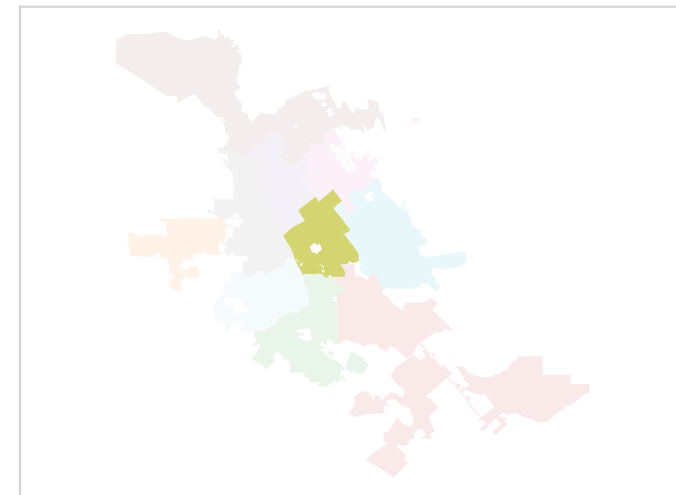
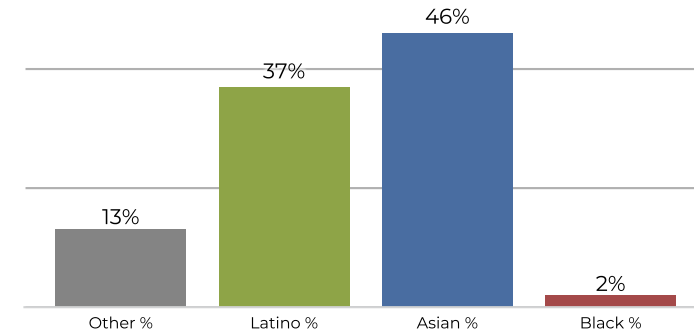
District 7



2020 Census

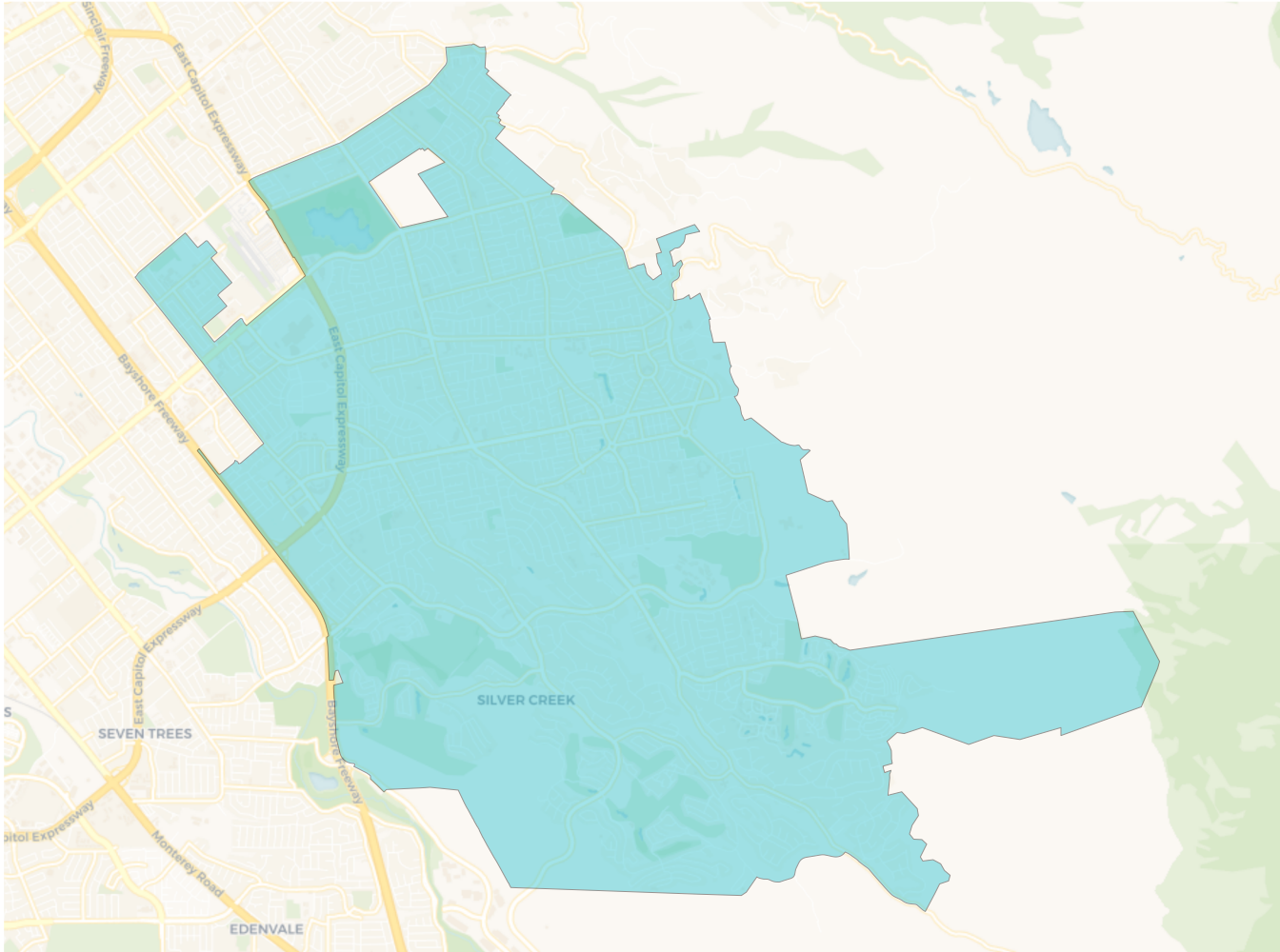


Citizen Voting Age Population

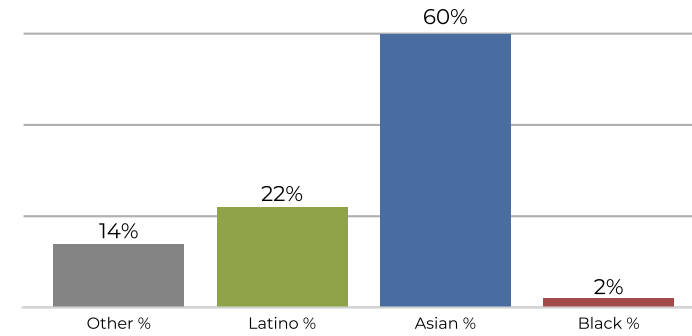


Population	Deviation	Deviation %	Other	Other %	Latino	Latino %	Asian	Asian %	Black	Black %
103,851	2,283	2.2%	10,113	9.7%	49,391	47.6%	41,827	40.3%	2,520	2.4%
Total CVAP	Other CVAP	Other CVAP %	Latino CVAP	Latino CVAP %	Asian CVAP	Asian CVAP %	Black CVAP	Black CVAP %		
60,348	8,296	13.7%	22,377	37.1%	28,321	46.9%	1,354	2.2%		

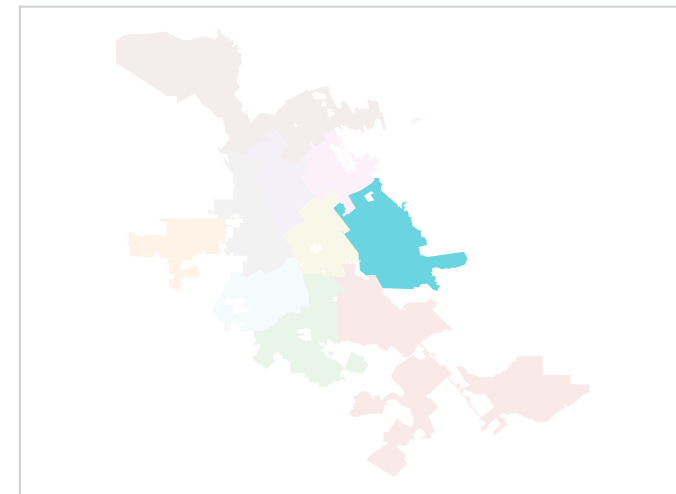
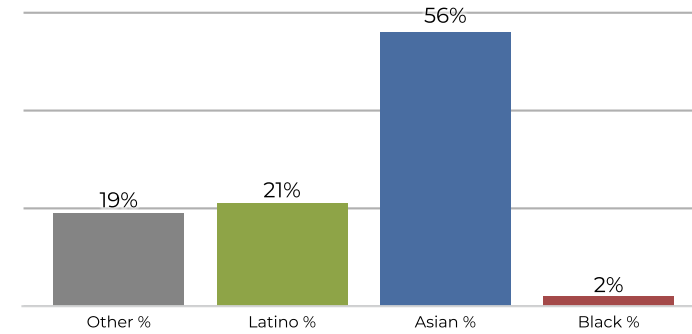
District 8



2020 Census

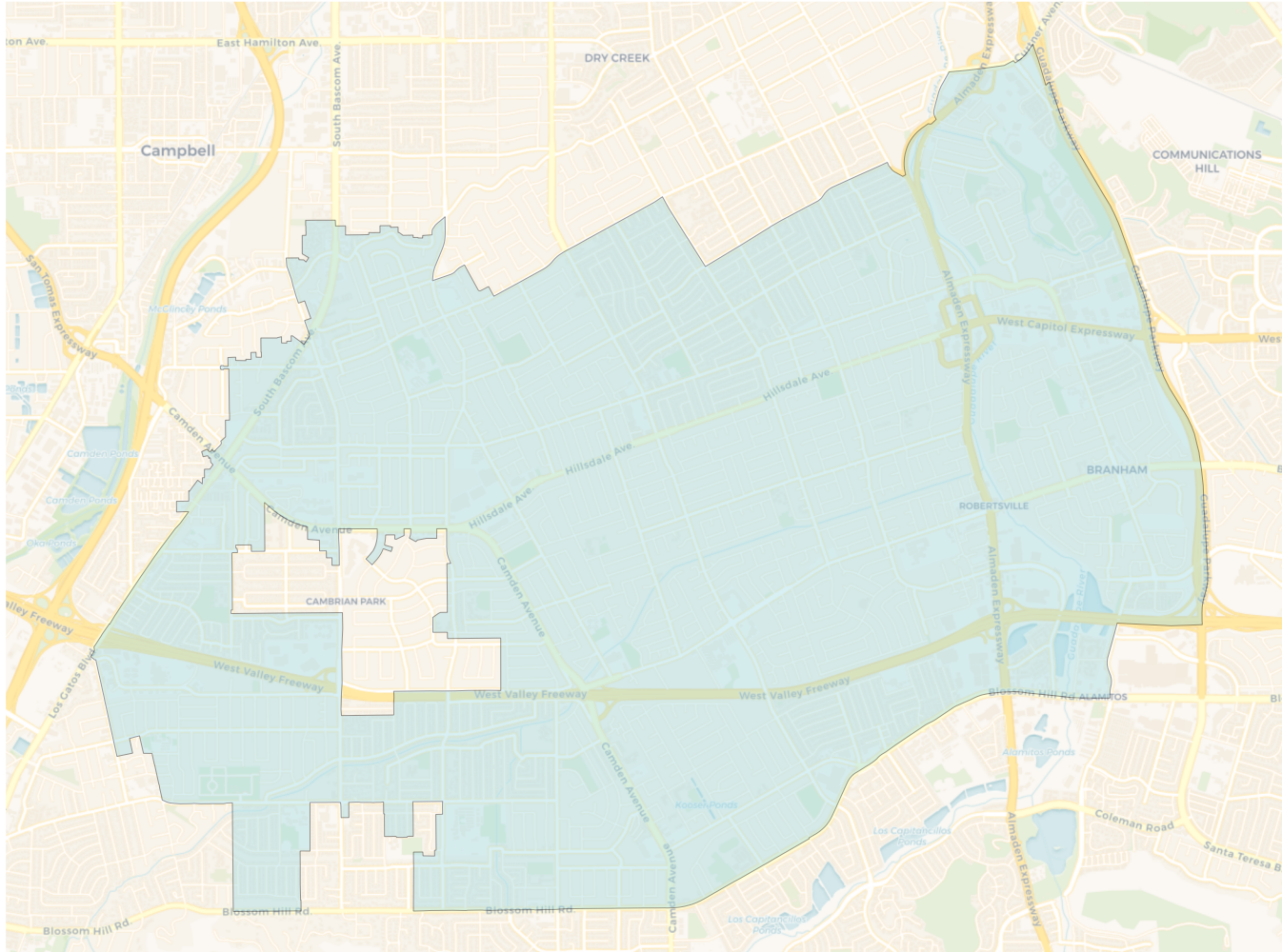


Citizen Voting Age Population

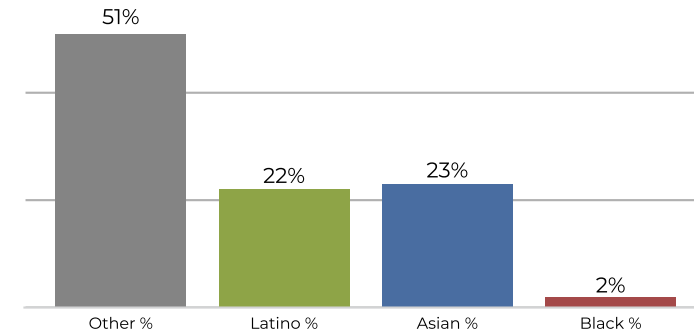


Population	Deviation	Deviation %	Other	Other %	Latino	Latino %	Asian	Asian %	Black	Black %
103,911	2,343	2.3%	15,500	14.9%	22,888	22.0%	63,327	60.9%	2,196	2.1%
Total CVAP	Other CVAP	Other CVAP %	Latino CVAP	Latino CVAP %	Asian CVAP	Asian CVAP %	Black CVAP	Black CVAP %		
71,989	14,250	19.8%	15,180	21.1%	40,694	56.5%	1,865	2.6%		

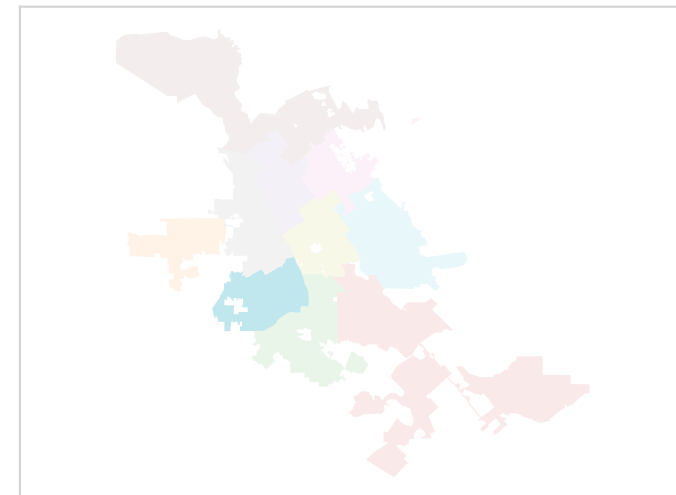
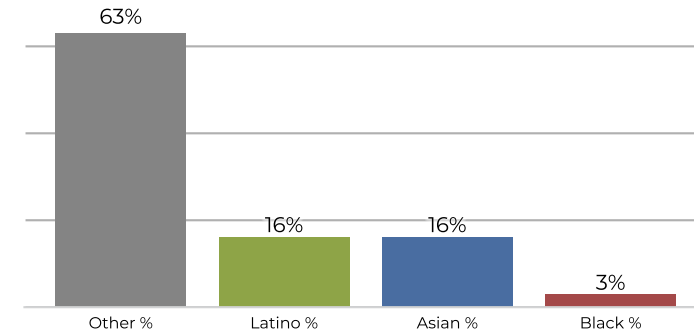
District 9



2020 Census



Citizen Voting Age Population



Population	Deviation	Deviation %	Other	Other %	Latino	Latino %	Asian	Asian %	Black	Black %
98,874	-2,694	-2.7%	50,959	51.5%	22,087	22.3%	23,148	23.4%	2,680	2.7%
Total CVAP	Other CVAP	Other CVAP %	Latino CVAP	Latino CVAP %	Asian CVAP	Asian CVAP %	Black CVAP	Black CVAP %		
65,164	41,641	63.9%	10,903	16.7%	10,677	16.4%	1,943	3.0%		